



BUILD TO SUIT—OFFICE/RETAIL

51 S. Newtown Street Road, Newtown Square, PA

Property Management

Facilities Management

Sales and Leasing

Lease Administration

Financial Analysis

Consulting

Project Management

Maintenance Services

Preventive Maintenance Programs

F-MAC



PROPERTY FEATURES

- Build-to-suit up to 6,000 sf, 2-story office/retail building with on-site parking
- Total lot area is 14,520 sf or .33 acres
- Architectural services provided. Can design building and space to Tenant's requirements
- Public sewer and water, gas available
- Great visibility on Route 252 (Newtown Street Road) just off of Route 3 (West Chester Pike)
- Across the street from Gentile's Produce Market between Custom Framing and Enterprise
- Convenient to restaurants, shopping, personal service shops, etc.
- Zoned: C-1 Commercial
- *Negotiable terms to qualified Tenants*

PRICING PREDICATED ON TENANT'S REQUIREMENTS

CONTACT INFORMATION

For more information on this Property, please contact:

Tom Taylor

Senior Vice President
Direct: 610-524-8331
ttaylor@briterealty.com

or

Jessi Ayoub

Associate
Direct: 610-524-8421
jayoub@briterealty.com



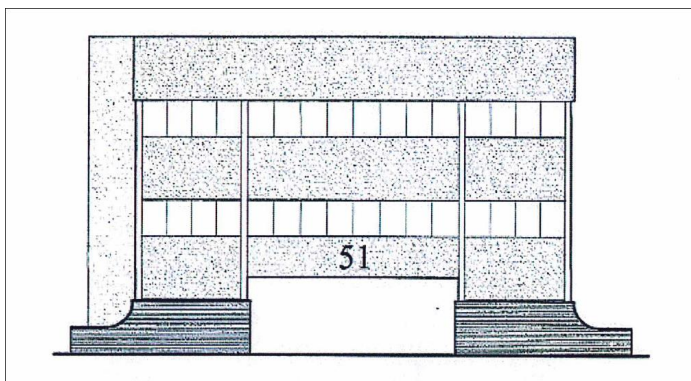
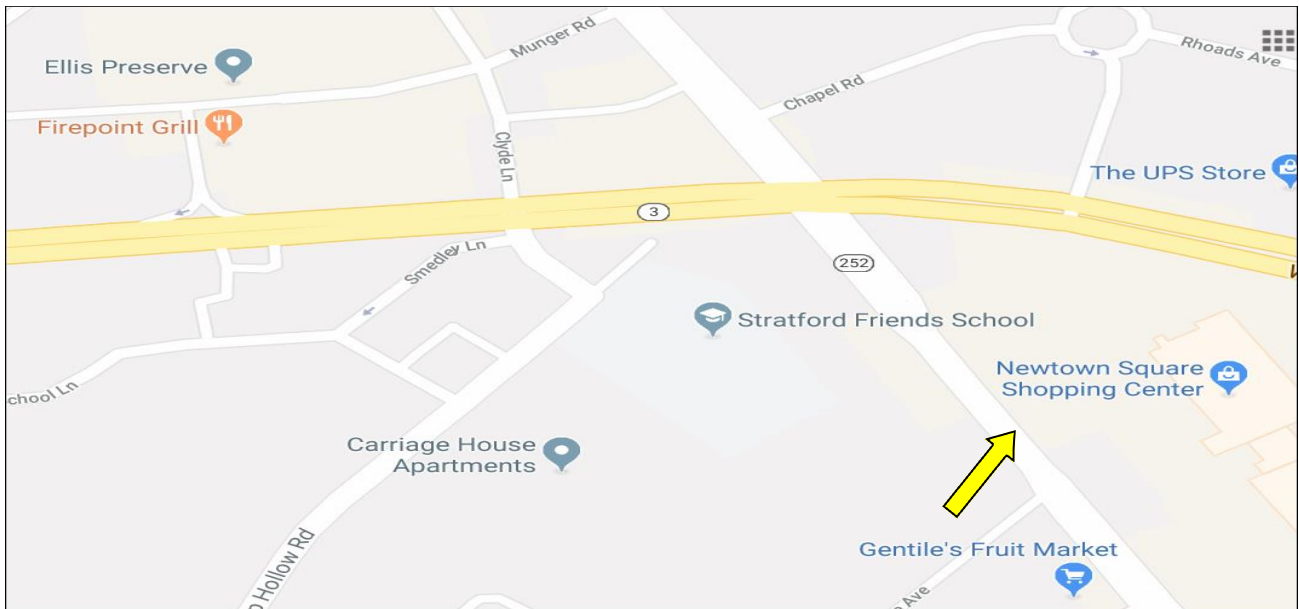
BRITE
REALTY SERVICES, INC.

51 S NEWTOWN STREET ROAD, NEWTOWN SQUARE, PA

STREET VIEW



MAP VIEW



Conceptual Rendering