



# OFFICE SPACE AVAILABLE FOR LEASE

505 EXTON COMMONS, EXTON, PA



Property Management

Facilities Management

Sales and Leasing

Lease Administration

Financial Analysis

Consulting

Project Management

Maintenance Services

Preventive Maintenance Programs

F-MAC

## PROPERTY FEATURES

- 934 SF office space available in Exton Commons. Additional space can be made available for a total of +/- 1,400 SF
- 1 private office and open bullpen space
- Walking distance to: Exton Square Mall, Fairfield Place SC, Exton Library, Exton Post Office and Whole Foods.
- Close to all major highways, Routes 30, 100, 113, 202 and PA turnpike.
- Professionally managed

LEASE: \$1,600/mth (934 SF)  
inclusive of electric and janitorial

## CONTACT INFORMATION

For more information on this property or to schedule an appointment, please contact:

**Eric McCurdy**

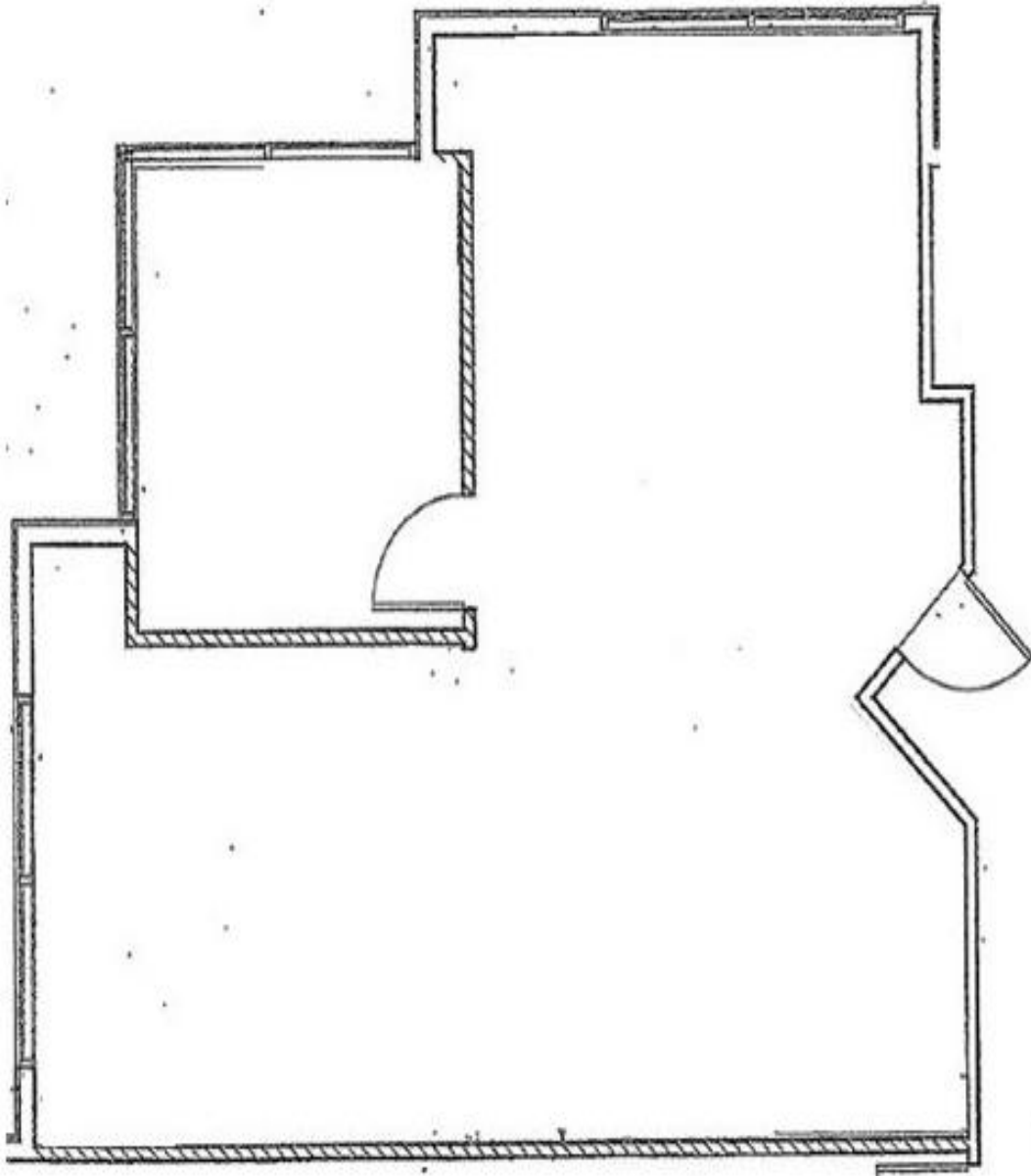
Senior Associate

Direct: 610.561.6048

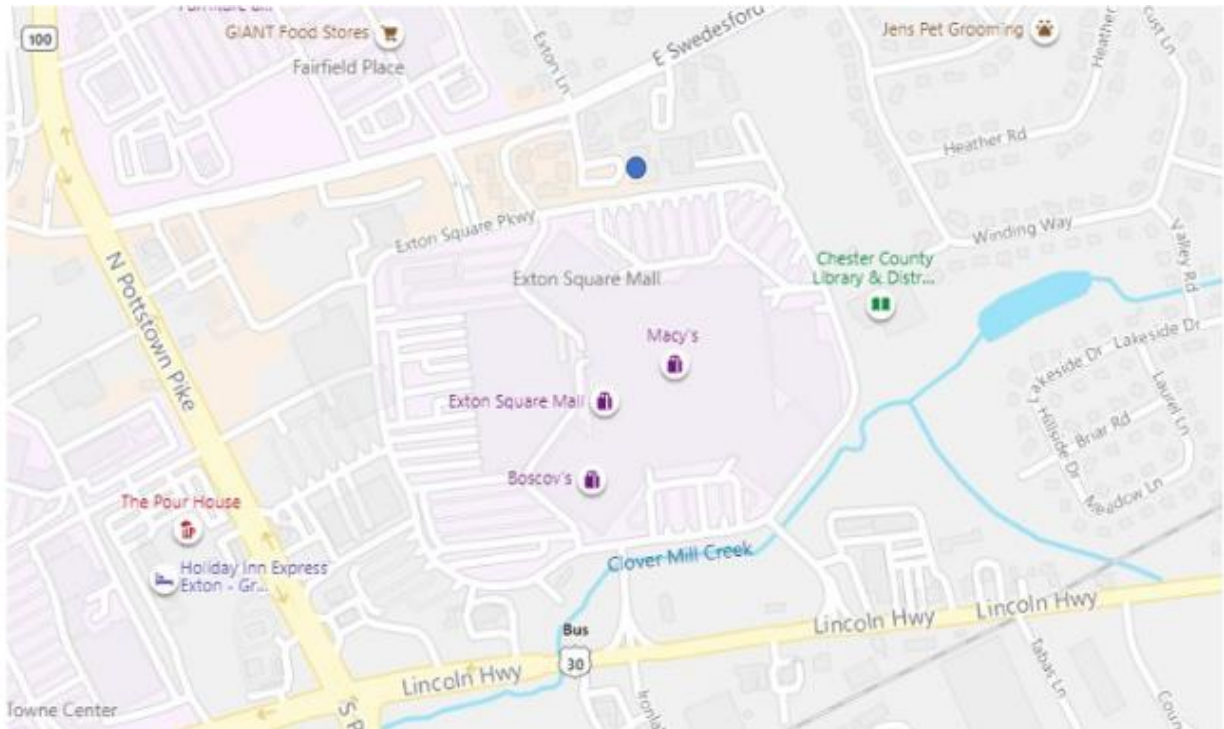
Email: [emccurdy@briterealty.com](mailto:emccurdy@briterealty.com)



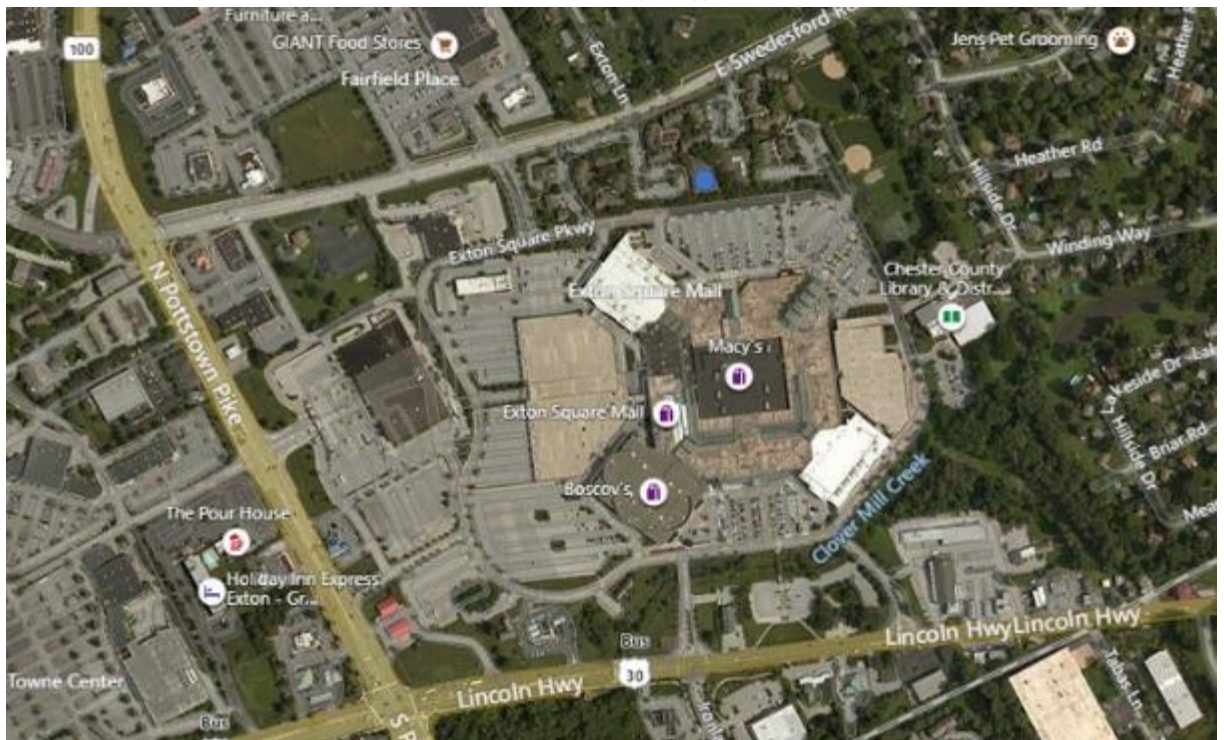
FLOOR PLAN



## ROAD MAP VIEW



## AERIAL VIEW



BIRD'S EYE VIEW



ZONING – TC - Town Center Mixed Use

West Whiteland Township

Municipal Zoning Map

Zoning Adopted: September 9, 2015

Map Created: September 24, 2015

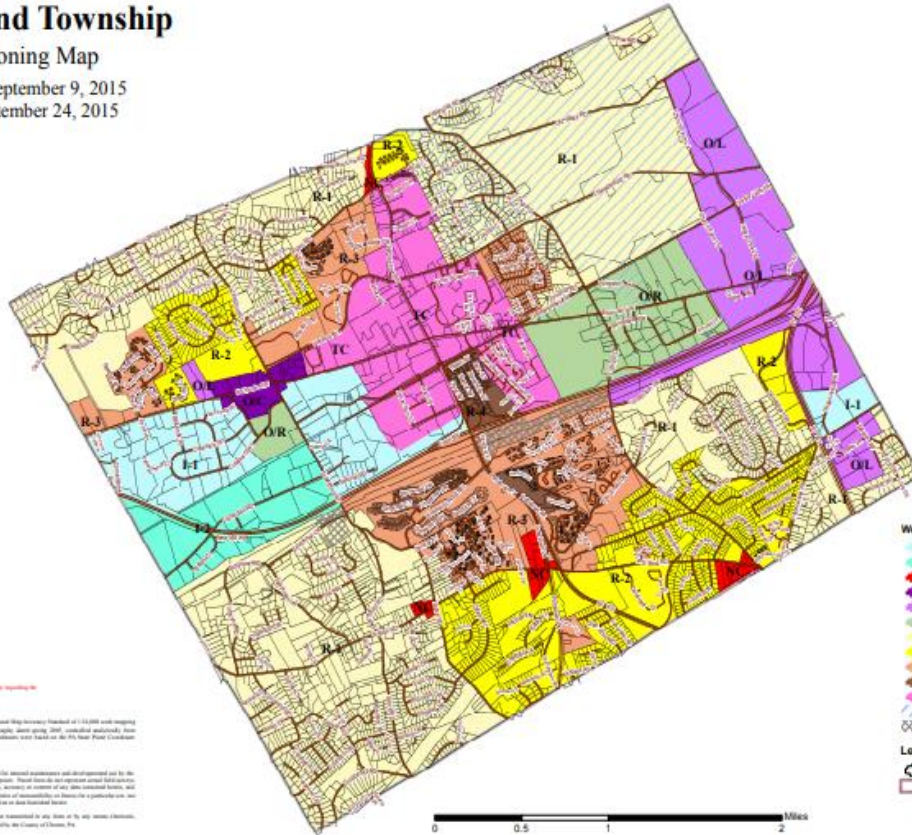


Township Office  
101 Commerce Dr.  
Exton, PA 19341  
[www.westwhiteland.org](http://www.westwhiteland.org)



**NOTICE TO CONTRACTORS**  
The Office of Zoning has an Anticollision Building and Code Enforcement Reporting System in place. Contractors are required to report any excavation work to the Office of Zoning.

**Legend**  
Parcel  
Municipal Boundary



- West Whiteland Zoning Districts**
- I-1 - Limited Industrial
  - I-2 - General Industrial
  - NC - Neighborhood Commercial
  - OC - Office/Commercial
  - OL - Office/Laboratory
  - OR - Office/Residential
  - R-1 - Residential
  - R-2 - Residential
  - R-3 - Residential
  - R-4 - Residential
  - TC - Town Center Mixed Use
  - Unfilled Overlay
  - Rail Transit Overlay
- Legend**
- Parcel
  - Municipal Boundary

