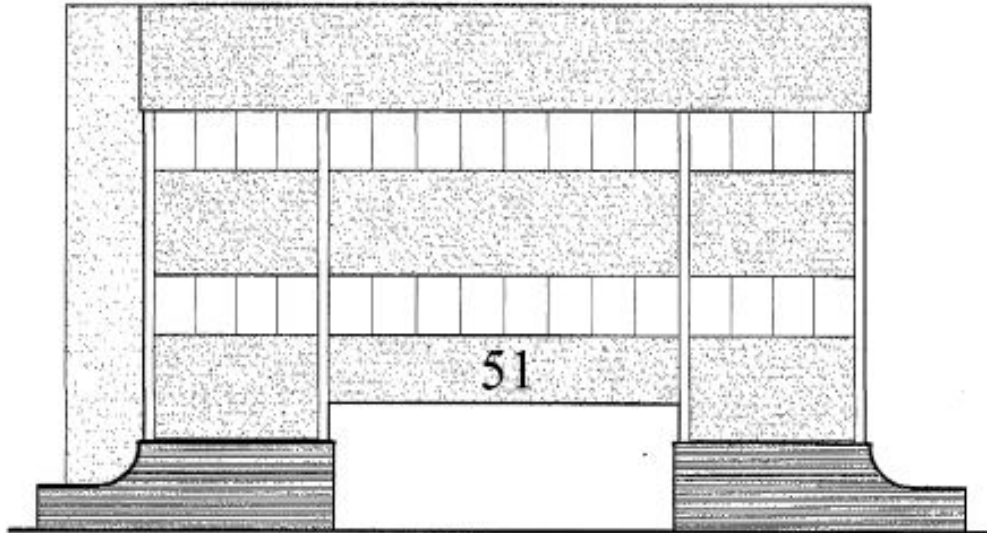




# BUILD TO SUIT - OFFICE/RETAIL

## 51 S. Newtown Street Road, Newtown Square, PA



For More Information Please Contact:

**Richard Beidleman**

Vice President

Director Sales & Leasing

Direct: 610.524.8367

Cell: 610.639.2282

E-mail: [rbeidleman@briterealty.com](mailto:rbeidleman@briterealty.com)



677 Exton Commons, Exton PA 19341

610.524.8285

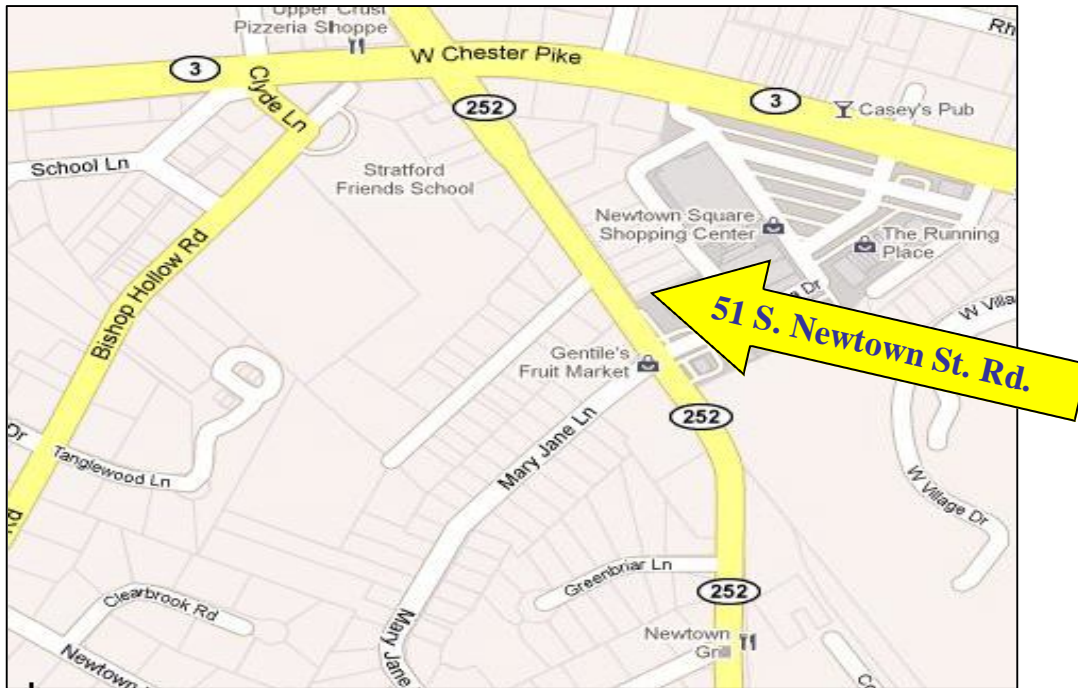
[www.briterealty.com](http://www.briterealty.com)

### FEATURES:

- **Build-to-suit. Up to 6,000SF 2 story office/retail building**
- **Total lot area - 14,520SF or 0.33 acres**
- **On site parking**
- **Great visibility on Rt. 252 (Newtown Street Road)**
- **Public water, sewer, gas available**
- **Architectural services provided**
- **Can design building and space to Tenants requirements**
- **Convenient to restaurants, shopping, personal service shops and hotels**
- **Easy access to all area major highways**
- **Zoned: C-1 Commercial**
- **Gentile's Produce Market across street**
- ***Negotiable terms to qualified Tenants***

**PRICING PREDICATED ON  
TENANTS REQUIREMENTS**

## Location Map



## Aerial View



**Richard Beidleman**  
Vice President  
Director Sales & Leasing  
Direct: 610.524.8367  
Cell: 610.639.2282  
E-mail: [rbeidleman@briterealty.com](mailto:rbeidleman@briterealty.com)



677 Exton Commons, Exton PA 19341  
610.524.8285  
[www.briterealty.com](http://www.briterealty.com)