



OFFICE SPACE FOR LEASE

1600 PAOLI PIKE, MALVERN



PROPERTY FEATURES

- Various individual offices as well as combinations of offices and cubicles are available for lease in this iconic Chester County building.
- Spaces include:
 - First floor offices—2 individual offices
 - Second floor has 2 offices and cubicles which can be leased separately or together.
- Tenant will have use of restrooms, shared kitchen, the conference room (by appointment)
- Arrangements can also be made for the use of the Boardroom for company functions/training.
- Furnished or bring your own.
- Plenty of parking
- Utilities and some janitorial included in rent
- Available immediately
- Located near the intersection of Paoli Pike & Route 352; close to downtown Malvern and minutes to Route 202.

Join the Chester County Chamber of Business & Industry in this beautiful office building!

Prices range from \$800-\$1500/month

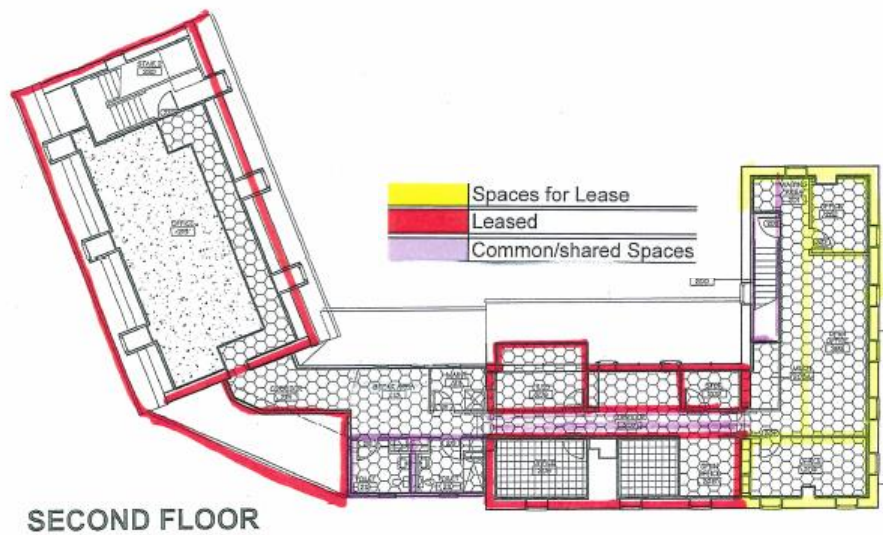
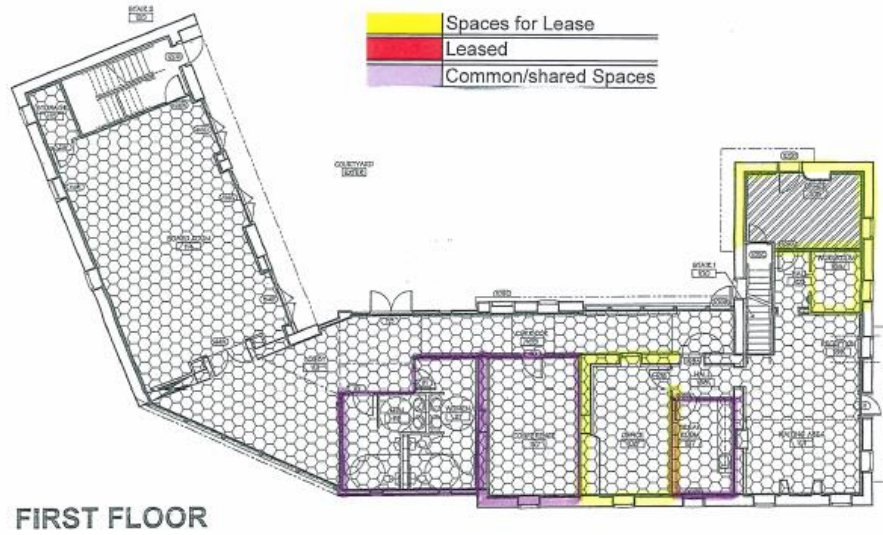
CONTACT INFORMATION

For more information on this property or to schedule an appointment, please contact:

Joanne Cuddahy
Vice President, Brokerage

Direct: 610.561.6051
E-mail: jcuddahy@briterealty.com

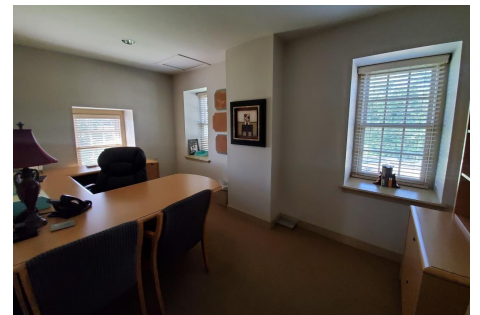




Main Entrance/Reception



Shared Kitchen



Example of Individual Office



Example of one of the cubicles available



Another cubicle



Beautiful Rear Courtyard